

USB Bridge



Quick Start Guide

BEFORE YOU BEGIN:

- *This guide is designed as a supplement to the complete user's manual for the USB bridge, located on the included CD-ROM*
- *Installing this device may require that you have administrator privileges on your PC.*
- *It is highly recommended that you install the included software before making the hardware connections to your PC.*
- *Do not connect the included USB cable or the hardware interface to your PC until after the software installation has completed. Failure to follow these instructions may cause your PC to "freeze" or cause the USB Bridge and software to incorrectly function.*
- *Should you need assistance installing the included software, please seek the assistance of a trained computer specialist or contact our technical support department:*

(800) 440-9476 (US Office, toll-free)
(714) 465-3400 (outside the US)
evsupport@enhancedvision.com

Software Installation

1. Start up your PC as normal. Load the included CD-ROM containing the Viewer Application software and USB drivers into the CD-ROM drive of your PC as shown (See Figure 1).
2. The installation should start automatically. If not, you may need to browse and double-click on the **“ViewerSetup.exe”** file contained on the CD-ROM (See Figure 2).
3. Please close any unused Windows applications during the installation. Once the Setup Wizard appears on screen, click on the **“Next”** button to continue the installation process (See Figure 3).
4. After reading the License Agreement appearing on screen, click on the **“I Agree”** button to continue the installation process (See Figure 4).
5. A different install location may be chosen if desired. For now, click on the **“Install”** button to continue the installation using the default folder (See Figure 5).
6. Once the installation has fully completed, click on the **“Finish”** button (See Figure 6).



Figure 1

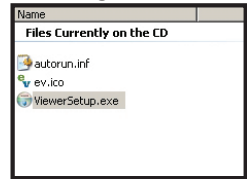


Figure 2

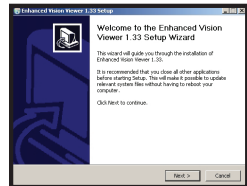


Figure 3

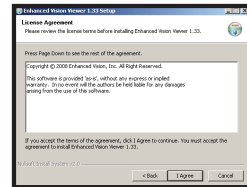


Figure 4

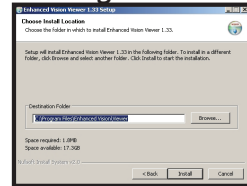


Figure 5

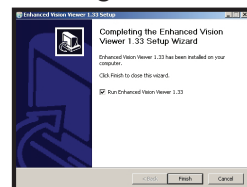


Figure 6

Hardware Installation

7. If you are setting up the USB Bridge for the first time, please insert the lithium battery into the charger base of the USB Bridge so that it can fully charge (See Figure 7)



Figure 7

8. Connect the camera output cable of your compatible Enhanced Vision product to the “CAMERA” input port on the rear of the USB Bridge. (See Figure 8)

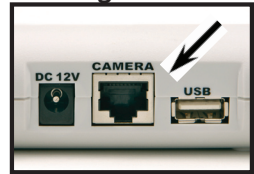


Figure 8

9. Connect one end of the included USB cable to the “USB” port on the rear of the USB Bridge. (See Figure 9)

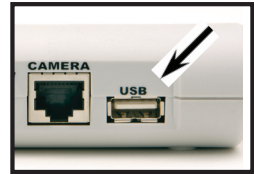


Figure 9

10. Connect the remaining end of the included USB cable to an available high-speed USB 2.0 port on the front, side or rear of your PC. (See Figure 10)



Figure 10

11. Connect the tip of the included power supply to the “DC 12V” input port on the rear of the USB Bridge. (See Figure 11)

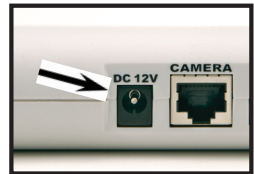


Figure 11

12. Plug in the remaining end of the power supply to an available AC/mains outlet (See Figure 12).

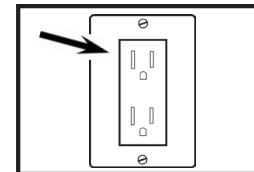


Figure 12

Using the USB Bridge

13. Press the POWER button on the front of the USB Bridge. When the power is turned on, the green "POWER" indicator will illuminate (See Figure 13).

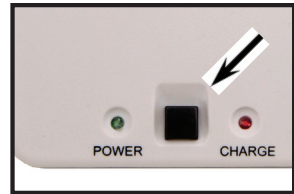


Figure 13

14. Start the viewer application by double-clicking on the "EV" icon, located on your Windows desktop (See Figure 14).



Figure 14

15. Momentarily, the camera image should appear on your PC screen (See Figure 15).

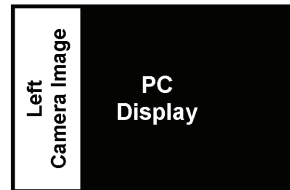


Figure 15

For detailed operating instructions of your USB Bridge and its functions, please consult the electronic version of the owner's manual, located on the included CD-ROM

**enhanced
vision™**

www.enhancedvision.com

(800) 440-9476 (US Office, toll-free)

+44 (0)115 9442317 (UK Office)

Part # MAN-0851-00
November, 2008

Copyright © 2008 by Enhanced Vision. All rights reserved.
Product specifications subject to change without prior notice.